

Home center Interface Server

Technical sheet



LUXOM

October 2014

About

Home center Interface Server (HIS module) allows you to operate your home automation system through mobile devices like iPhone/iPad, Android smartphone/tablet and pc (touchscreen).

Prerequisites

You will need a fully working home automation system supported by Home center that has the correct interface for Home center to connect too. Make sure you can access your home network through an Ethernet cable. To use the app on an iPhone or iPad, you will need a Wi-Fi network connection. Please note that some firewall or router settings may prevent auto detection of the HIS module for the Home Center clients. You may need to change settings or add an exception to your firewall to enable communication between the Home Center client and the HIS module.

Wiring

The HIS module is a server module that needs to be connected to the home automation system as well as your network. Depending on your home automation system you may need a USB cable to connect the HIS module to the home automation system. Use a standard network cable (RJ45) to connect the HIS module to your home network. **Important: always connect power last.**

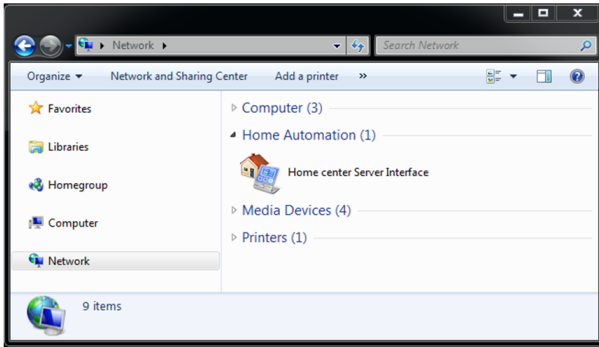
First installation

During the first installation of the HIS module, it needs to be connected to a network with internet access. The server will automatically activate its licence through the internet. The day of activation counts as the start date for 1 year of free updates (included). If you are connecting a home automation system for the first time, the server will also read all modules and sort them by groups. If your home automation system is installed on a location without internet access, you will first need to activate the HIS module on a network that does have internet access and connect it to the home automation system afterwards (always connect power last). The HIS module will be ready to use as soon as it has been activated and the system has performed a first scan.

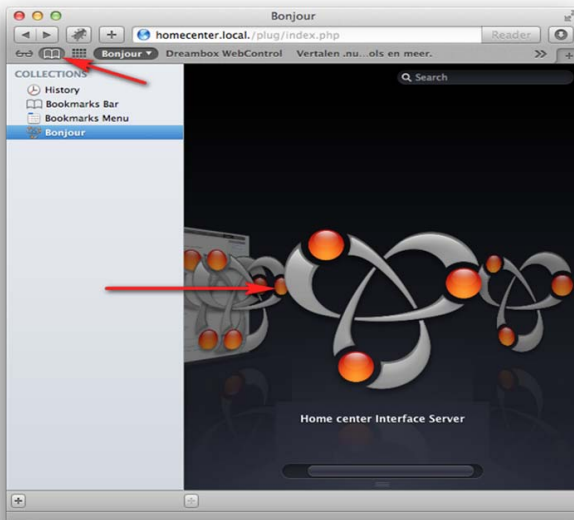
Open the HIS home page in a web browser

For some downloads and changes in the HIS module, you will need to go to the web page. You can do this in various ways:

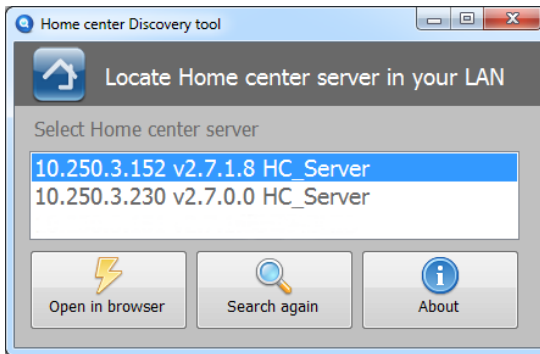
- Windows 7 in a standard home network: Open Windows Explorer and select Network. Double click the icon Home center Server Interface to open the web page (UPNP detection).



- Mac OS X in a standard home network: Open Safari and click Bookmarks (open book icon). On the left: select Bonjour. Locate the item Home center Interface server in the list. Double click it.



- Using the Discovery Tool on the home center website: <http://download.homecenter.be> (UPNP detection and detection through its own broadcast). The tool will display the available Home center server (or servers) at startup (unless firewall settings on your computer or router settings prevent the device's detection). Select the Home center server and click the button Open in browser.



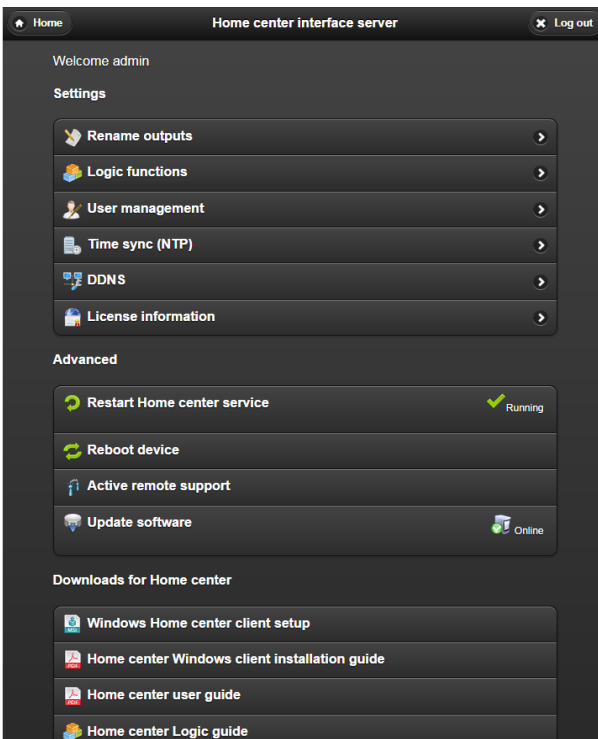
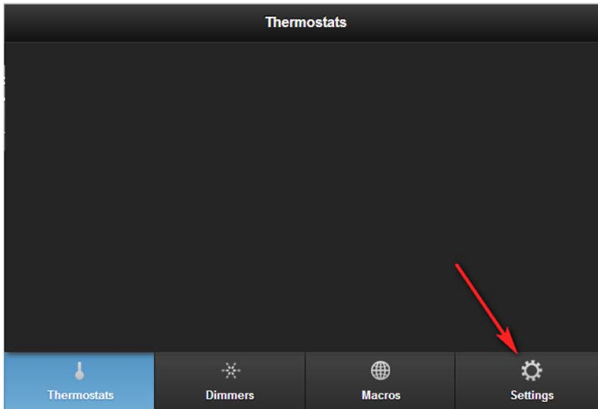
- You can also type the IP address of the HIS module directly in the browser's address bar. You can find the IP address in the iPhone/iPad app, which automatically displays the IP address. Or on the Home center client (Windows), which displays the IP address on the login window.

Log in

When opening the HIS module web page, you need to provide a user name and password. The default user name is **admin** , the default password is **admin**. When the installation is done, you can start controlling the HIS module through any of the following devices connected to your network: iPhone, iPod touch, iPad or Windows PC, Android tablet or smartphone. The Home center app for iOS devices is freely available in the App Store. When using an Android device, you can control the HIS module through its web page. You can download the Windows client software from your own HIS module. You will find it in the Settings-page that can be accessed from your browser.

Open the Settings page of the HIS

Open the web page and log in. To open the Settings page, click the Settings icon in the lower right corner. If the window contains a button More, first click this button. The list of settings appears.



On the Settings page, you can:

- restart the Home center software (on the HIS module)
- restart the device

- rename outputs
- implement logic functions (up to 15) to connect to Sonos devices
- manage users: define what users can see and control through user settings. For details, refer to the Home center user guide: chapter 5.9.1
- download software updates
- download user guides

Other settings in Home center

Other settings (create zones, add floor-plans or images, buttons...) are available in the Settings window of the Home center Windows client.

For details, refer to the user guide for Home center: Home center User guide. You can download it from the Settings page on the HIS module. Or on <http://manuals.homecenter.be>.

Hardware

Dimensions

110 mm x 69.5 mm x 48.5 mm (length x width x height)

I/O Connections

- Gigabit Ethernet interface (LAN)
- USB 2.0 interface

Power

- Power voltage: 100-240 VAC/50-60 Hz. Max. 20 W
- DC consumption: 5 V/3.0 A max.
- Uses 5 W in working mode for Home center

More information

You will find the most recent information on <http://www.homecenter.be>

The user guide is available on <http://manuals.homecenter.be>